

**SeaMed**<sup>®</sup>

**3 in  
ONE**



**POCKET  
ULTRASOUND**

**LINEAR  
CONVEX  
CARDIAC**

**CE FDA ISO**

**DENİZLER  
MEDİKAL**

## CONVEX

Frequency  
2.5 / 5 MHz

Depth  
90 - 160 mm

## CARDIAC

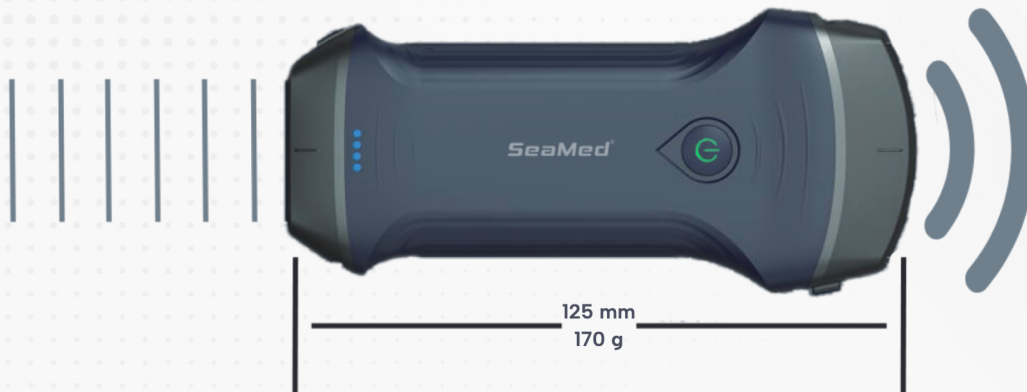
Frequency  
3.2 / 5 MHz

Depth  
90 - 305 mm

## LINEER

Frequency  
7.5 / 10 MHz

Depth  
20 - 100 mm



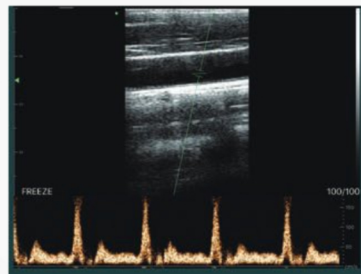
Compatible with Android, IOS and Windows operating systems. It can be used on PC, Tablets and Smartphones.

You can easily scan anyone, anytime and anywhere in places such as clinics, patient rooms, emergency rooms or operating rooms.

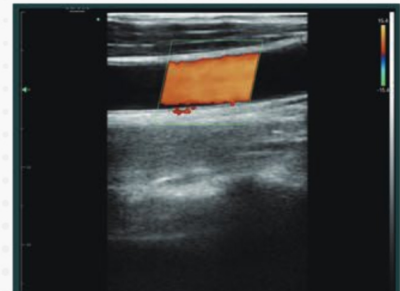
Applications: Abdomen, Obstetrics/Gynecology, Cardiac, Kidney, Urology, Thoracic, Thyroid, MSK, Vascular, Pediatrics, Carotid



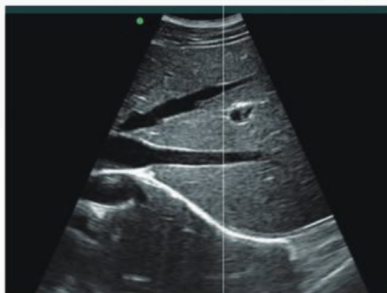
**Thyroid C Mode**



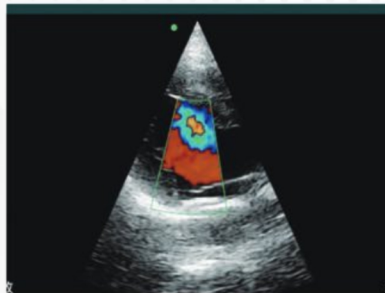
**Vascular PW Mode**



**Carotid C Mode**



**Liver B Mode**



**Cardiac C Mode**



**Kidney C Mode**

Water and Shock Resistance at  
IP68 Level

2800 mAh  
Lithium Battery

Operating Modes:  
B, B+B, B/M,  
Color, PW, PDI,  
B+Color+PW

Can be Used While Charging  
and with Wired  
Connection



## Technical Specifications

**Probe:** Wireless Dual-Head Linear, Cardiac, and Convex

**Element:** Dual 128

**Frequency:** 3.5/5.0 MHz, 7.5/10 MHz, 2.5/5.0 MHz

**Depth:** 90-305 mm, 20-100 mm, 90-160 mm

**Programs:** Abdomen, Obstetrics/Gynecology, Cardiac, Urology, Kidney, Lung, Thyroid, Small Organ, Pediatrics, Vascular, Carotid, Chest, Musculoskeletal (MSK), Nerve

**Compatible Devices:** PC, Phone, Tablet

**Connection:** USB & WiFi

### Measurements

**B Mode:** Length, Area/Perimeter, Angle, Trace, Distance

**B+M Mode:** Heart Rate, Time, Distance, LVID (LVIDd, LVIDs, EF, SV)

**B+PW Mode:** Speed, Heart Rate (2), 5/D, Depth

**Automatic Vascular Flow:** PS, ED, TAMAX, TAMEAN, Pi, RI, 5/D, DIAM, FL

**Adjustable Parameters:** GN (gain), D (depth), ENH (enhancement), DR (dynamic range), F (frequency), FocusPos, PRF, WF, Mod (mode), 8TGC, Biopsy, Annot (annotation), Page left/right/up/down.

**Playback Frame Rate:** 100, 200, 500, 1000 (optional)

**Imaging Modes:** B, B+B, 8/M, Color, PW, PDI, B+Color+PWG

**Gray Scale:** 256 level

**Wi-Fi:** 802.11g/20MHz/2.4G/5G/450Mbps

**Channels:** 64

**Gain:** 40-110 dB

**Battery Life:** 3 hours operation, 12 hours standby

**Charging:** USB charging and wireless charging

**Durability:** IP68