

SeaMed[®]



CONVEX

WIRELESS POCKET ULTRASOUND

CE FDA ISO

 DENİZLER
MEDİKAL

More Professional Imaging with a 192-Element Probe



Heat-Resistant
Special Cooling Coating

Non-Slip Grip Pads

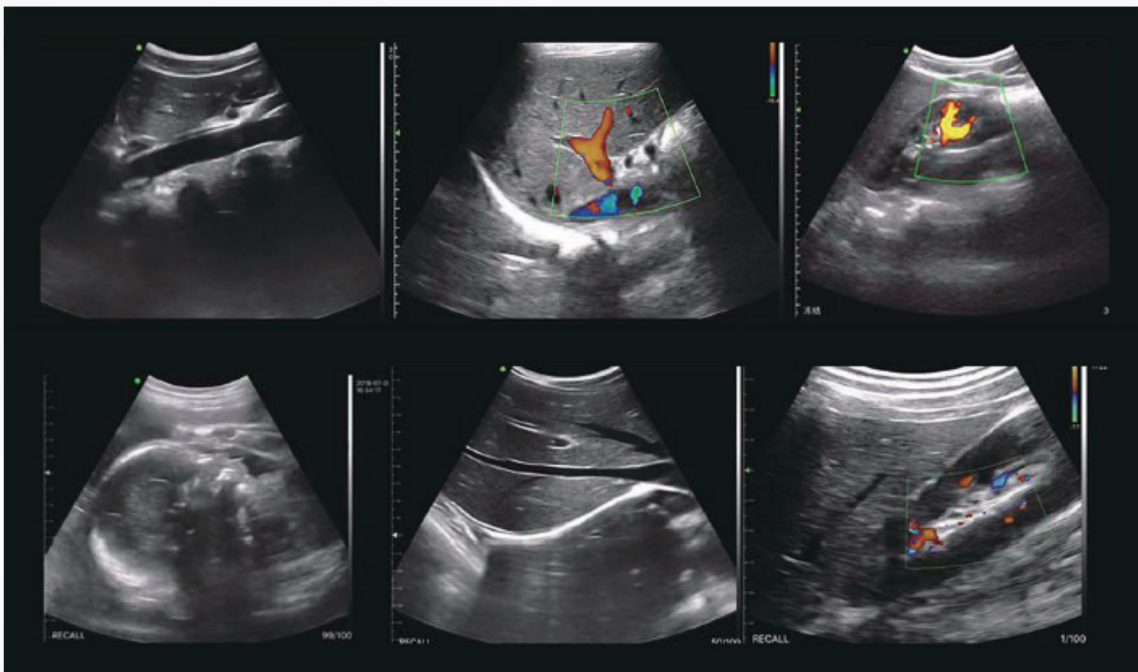
Longer Usage Time with
4200 mAh Dual Battery Cells



Compatible with Android, iOS, and Windows operating systems.
Can be used on PCs, tablets, and smartphones.

IP68

Water and dust resistance at IP68 level. The body provides maximum protection against dust and impacts, designed to protect the device even during prolonged exposure underwater.



TECHNICAL SPECIFICATIONS

Probe: Wireless Convex Probe

Elements: 192

Frequency: 3.5-5 MHz

Depth: 90-305 mm

Main Computer: IOS/Android/Windows, Tablet, Smartphone, PC

Connection: WiFi

Software Settings: Gain (GN), Depth (D), Enhancement (ENH), Dynamic Range (DR), Frequency (F), Focus Position (FocusPos), Pulse Repetition Frequency (PRF), Field of View (WF), 8-Channel Graphic Amplifier (8TGC), Biopsy (Biopsy), Annotation (Annote)

Measurement

B: Length, Area, Circumference, Angle, Trace, Distance

B+M: Heart rate, Time, Distance

B+PW: Heart rate (2), S/D, Depth

Video (fps): 100, 200, 500, 1000 (optional)

Display Modes: B, B/M, Color, PW, PDI, B+B

WiFi Type: Built-in WiFi, 802.11g/20MHz/5GHz/450Mbps

Channels: 64

Frame Rate: 24 fps

Gain: 40-110 dB

Power Source: Built-in 4200 mAh battery

Replaceable Battery: Yes

Battery Life: 3 hours (operating mode), 12 hours (standby mode)

Charger: Wireless charger, USB cable

Cooling Coating: Yes

Waterproof: IP68

Non-Slip Design: Yes, 4 sides